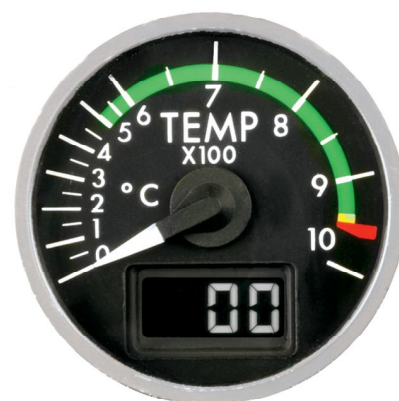


LCD ENGINE GAGES

OVERHAUL • REPAIR • EXCHANGE

For more than 30-years, Pacific Southwest Instruments (PSI), headquartered in Corona CA, has been providing MRO support for Ametek Indicators.

As an industry leader in the field of aircraft instrument repair, overhaul and exchange, PSI takes pride in providing our customers with value-added services and lowering your overall operating costs. Through our innovative engineering solutions, we have developed manufacturing processes to prolong the life of Instruments and Avionics. This holds true with our long-standing reputation of supplying a DER replacement option for the LCD's in the following indicators:



Ind. PN	LCD P/N	Description	Platform
SEDL-OC2P	DNN-3687-L	Engine Torque Indicator	DHC-8
SEDL-OC2S	DNN-3687-L	Engine Torque Indicator	DHC-8
SELOC19DW	DNN-3687-L	ITT Indicator	DHC-8
SEL-OC19EK	DNN-3687-L	ITT Indicator	DHC-8
SEL-OC29DA	DNN-3687-L	NH % RPM Indicator	DHC-8
SEL-OC29DF	DNN-3687-L	Prop RPM Indicator	DHC-8
SELOC29DJ	DNN-3687-L	NL % RPM Indicator	DHC-8
SEL-OC2N	DNN-3687-L	Engine Torque Indicator	DHC-8
SELOC8G	DNN-3687-L	Fuel Flow Indicator	DHC-8
SELOC119D	DNN-3687-L	O.A.T. Indicator	EMB-120
SEDL-OC19EG	DNN-3687-M	T6 Temperature Ind.	EMB-120
SEDL-OC29J	DNN-3687-M	NH/NL Percent RPM Ind.	EMB-120
SEDL-OC29M	DNN-3687-M	NH/NL Percent RPM Ind.	EMB-120
SEDL-OC2R	DNN-3687-M	Torque Ind.	EMB-120
SELOC29BJ	DNN-3687-M	NH/NL Percent RPM Ind.	EMB-120
SELOC29DG	DNN-3687-M	NH/NL Percent RPM Ind.	EMB-120
SELOC29DH	DNN-3687-M	NP Percent RPM Ind.	EMB-120
10227N01T00	DNN-3687-AE	ITT Indicator	SAAB-340
10251N01T00	DNN-3687-AE	ITT Indicator	SAAB-340

CALL US TODAY! For more information please contact the PSI Customer Support Team at (800) 621-1736.



1721 Railroad Street • Corona, CA • 92880 • USA • (951) 737-0790

See our complete overhaul and repair capabilities at www.psilabs.com

FAACRS#KD3R627L • EASA.145.4723 • Instrument 1,2,3,4 • Radio 1,2,3 • Accessory 3